

CAXperts

Plant IT-Solutions

IsoOverView for PDS®

Features:

- Automatic top view creation of the pipe routing on Isogen® isometric drawings
- Automatic creation of a cover sheet (IsoCoverSheet)
- Dimension between connection points and the plant grid
- Isometric and real scaled representation of the pipe routing
- Placing of text from PDS-independent Excel files on an isometric drawing
- Automatic print output with lplot®

Benefits:

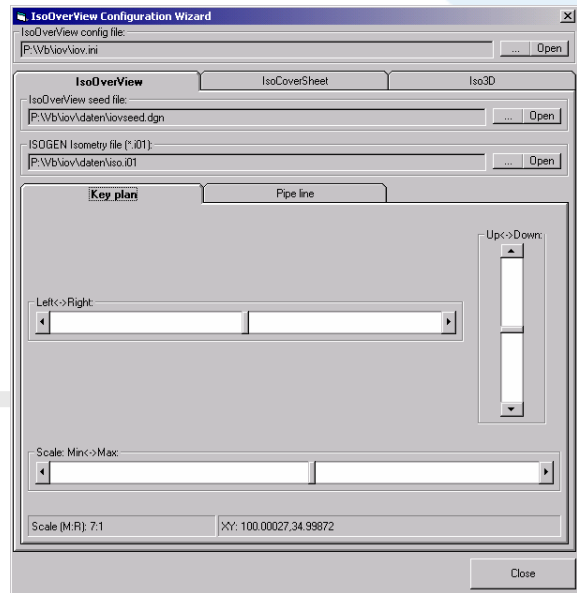
- Considerable reduction of piping arrangement drawings
- Reduction of time needed for erection
- Fast and easy configuration of projects with user-friendly Configuration Wizard



IsoOverView – IsoCoverSheet

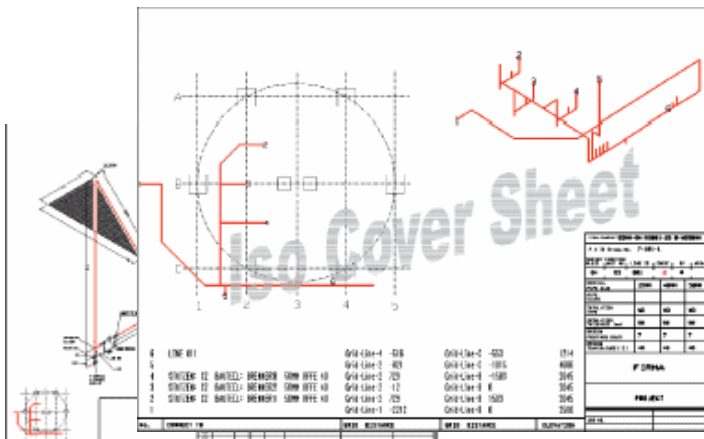
The key plan representing the pipe routing, which used to be drawn on isometric drawings in the past, became a digital counterpart in IsoOverView isometric drawings.

This provides a rapid overview of the pipe routing in the plant which has been a requirement of erection teams since many years. In real scale and without the need for time-consuming calculation of connect point dimensions. This significantly reduces the number of piping arrangement drawings and the time needed for erection.



IsoOverView – Simple to use

The software automatically places a key plan of the plant on each Isogen isometric drawing. It shows the routing of the entire pipe with its surrounding. IsoOverView also generates a cover sheet (IsoCoverSheet) for every pipe isometric automatically. The IsoCoverSheet shows the pipe routing with the key plan and the numbered connection points. An additional view displays the entire pipe routing in real scale. This provides an extremely clear picture of the entire layout. The IsoCoverSheet also includes a table of all connection



IsoOverView – Easy configuration

IsoOverView is very easy to handle. It is started after the Isogen run. A configuration file contains all the information required. The software settings in the configuration file can also be made for a specific design area. Plotting of the isometric drawings can be performed by Iplot automatically. Other significant features are:

- Configuration using the Configuration Wizard only takes a few minutes for any project.
- Isometric drawings can be labeled with any information from MS Excel® or MS Access® additionally.

Contact & Information

CAXperts GmbH
Carl-Zeiss-Ring 4
D-85737 Ismaning
Germany

CAXperts
The Xperts for plant design automation

P.: +49 (89) 96 97 72 0
F.: +49 (89) 96 97 72 11
Email: Info@CAXperts.de
Internet <http://www.caxperts.com>

CAXperts
Plant IT-Solutions